



# REES N.D.T. INSPECTION SERVICES 2008 LTD.



15612-89 Street  
Grande Prairie, AB T8V 2N8

Grande Prairie  
(780) 539-3594  
(780) 532-8047 (Fax)

Dispatch  
1-888-540-3594  
www.recsndt.com

Vegreville  
(780) 603-4887  
Email: gcoers@reesndt.com

INSPECTION DATE: 04-Aug-25

CLIENT: Caliber Energy Systems  
ADDRESS: 10497 92 St  
High Level AB T0H 1Z0

REES NDT PO NUMBER: R87713

CLIENT PO NUMBER:

REES NDT WO NUMBER: 221630

## CAOEC LEVEL IV INSPECTION CERTIFICATE

CERTIFICATION OF: Slip Type Elevator Assembly

MAKE: BJ

MODEL: 1.315 - 2 7/8" MYT - c/w 2 7/8" Slip Assembly

SERIAL NUMBER: VRS 997

CAPACITY: 40 ton

OWNER: Caliber Energy Systems

REPAIRS/MECHANICAL COMPLETED BY: Rees NDT

Rees NDT Inspection Services 2008 Ltd. performed a CAOEC VISUAL AND NON-DESTRUCTIVE TESTING inspection on the above mentioned SLIP TYPE ELEVATOR ASSEMBLY. All observations have been recorded and are disclosed in the complete documentation for Rees NDT Work Order #221630. The scope of this certificate is limited to the inspection of the item's structural condition at the time of inspection and does not imply a review of the equipment's design or its associated capacity rating. The capacity noted above reflects the original equipment manufacturer's maximum capacity rating and may be reduced by operating conditions, regulatory requirements and the use of auxiliary equipment that has a lower capacity rating.

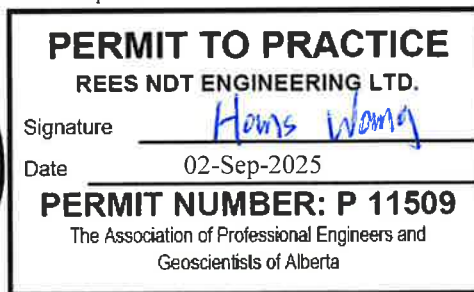
The undersigned Engineer reviewed all the inspection reports and has issued this certificate after all required repairs (if any) were completed. In the undersigned Engineer's opinion, the SLIP TYPE ELEVATOR ASSEMBLY may be returned to service and is safe to use within the original manufacturer's specifications. The equipment owner is obliged to supply the OEM's operating instructions with the equipment and maintain the OEM's identification and capacity markings. If OEM information cannot be obtained, certified replacements must be obtained from a Professional Engineer.

This certification covers the above mentioned unit for a period of 6 YEARS AS PER CAOEC RECOMMENDED PRACTICE 4.0 from the date of inspection, or until the unit is damaged by handling, transportation or operation.

Reviewed  
By:



02-Sep-2025





# REES N.D.T. INSPECTION SERVICES 2008 LTD.



15612-89 Street  
Grande Prairie, AB T8V 2N8

Grande Prairie  
(780) 539-3594  
(780) 532-8047 (Fax)

Dispatch  
1-888-540-3594  
www.reesndt.com

Vegreville  
(780) 603-4887  
Email: gcoers@reesndt.com

INSPECTION DATE: 04-Aug-25

CLIENT: Caliber Energy Systems  
ADDRESS: 10497 92 St  
High Level AB T0H 1Z0

REES NDT PO NUMBER: R87713

CLIENT PO NUMBER:

REES NDT WO NUMBER: 221630

## CAOEC LEVEL IV INSPECTION CERTIFICATE

CERTIFICATION OF: Slip Type Elevator Assembly

MAKE: BJ

MODEL: 1.315 - 2 7/8" MYT - c/w 2 7/8" Slip Assembly

SERIAL NUMBER: VRS 997

CAPACITY: 40 ton

OWNER: Caliber Energy Systems

REPAIRS/MECHANICAL COMPLETED BY: Rees NDT

Rees NDT Inspection Services 2008 Ltd. performed a CAOEC VISUAL AND NON-DESTRUCTIVE TESTING inspection on the above mentioned SLIP TYPE ELEVATOR ASSEMBLY. All observations have been recorded and are disclosed in the complete documentation for Rees NDT Work Order #221630. The scope of this certificate is limited to the inspection of the item's structural condition at the time of inspection and does not imply a review of the equipment's design or its associated capacity rating. The capacity noted above reflects the original equipment manufacturer's maximum capacity rating and may be reduced by operating conditions, regulatory requirements and the use of auxillary equipment that has a lower capacity rating.

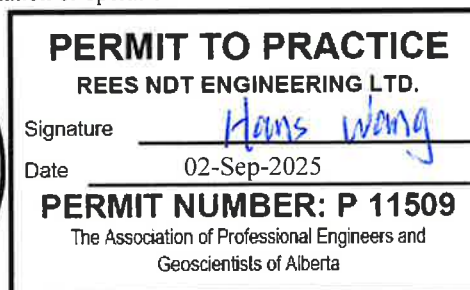
The undersigned Engineer reviewed all the inspection reports and has issued this certificate after all required repairs (if any) were completed. In the undersigned Engineer's opinion, the SLIP TYPE ELEVATOR ASSEMBLY may be returned to service and is safe to use within the original manufacturer's specifications. The equipment owner is obliged to supply the OEM's operating instructions with the equipment and maintain the OEM's identification and capacity markings. If OEM information cannot be obtained, certified replacements must be obtained from a Professional Engineer.

This certification covers the above mentioned unit for a period of 6 YEARS AS PER CAOEC RECOMMENDED PRACTICE 4.0 from the date of inspection, or until the unit is damaged by handling, transportation or operation.

Reviewed  
By:



02-Sep-2025



Inspected By: J. Ibarbia W. Werner HD Equip Tech (K-06-101358) J. Banman K. Millier CWB #5005952 (Level I) SNT #062 (MPI II) Welder (223643A) N. House

Non-destructive Testing · Wall Thickness Testing · Hardness Testing · Crane & Picker Certification · Drilling Rig Certification