



REES N.D.T. INSPECTION SERVICES 2008 LTD.



15612-89 Street
Grande Prairie, AB T8V 2N8

Grande Prairie
(780) 539-3594
(780) 532-8047 (Fax)

Dispatch
1-888-540-3594
www.reesndt.com

Vegreville
(780) 603-4887
Email: gcoers@reesndt.com

INSPECTION DATE: 18-Aug-25

CLIENT: Caliber Energy Systems
ADDRESS: 10497 92 St
High Level AB T0H 1Z0

REES NDT PO NUMBER: R87904

CLIENT PO NUMBER:

REES NDT WO NUMBER: 222069

CAOEC LEVEL IV INSPECTION CERTIFICATE

CERTIFICATION OF: Slip Type Elevator Assembly

MAKE: Jiangsu Rutong Petro-Machinery Co. Ltd.

MODEL: 1.315 - 2 7/8" MYT - c/w 2 3/8" Slip Assembly

SERIAL NUMBER: CER 0502

CAPACITY: 40 ton

OWNER: Caliber Energy Systems

REPAIRS/MECHANICAL COMPLETED BY: Rees NDT

Rees NDT Inspection Services 2008 Ltd. performed a CAOEC VISUAL AND NON-DESTRUCTIVE TESTING inspection on the above mentioned SLIP TYPE ELEVATOR ASSEMBLY. All observations have been recorded and are disclosed in the complete documentation for Rees NDT Work Order #222069. The scope of this certificate is limited to the inspection of the item's structural condition at the time of inspection and does not imply a review of the equipment's design or its associated capacity rating. The capacity noted above reflects the original equipment manufacturer's maximum capacity rating and may be reduced by operating conditions, regulatory requirements and the use of auxillary equipment that has a lower capacity rating.

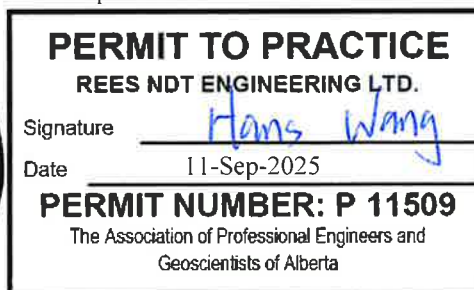
The undersigned Engineer reviewed all the inspection reports and has issued this certificate after all required repairs (if any) were completed. In the undersigned Engineer's opinion, the SLIP TYPE ELEVATOR ASSEMBLY may be returned to service and is safe to use within the original manufacturer's specifications. The equipment owner is obliged to supply the OEM's operating instructions with the equipment and maintain the OEM's identification and capacity markings. If OEM information cannot be obtained, certified replacements must be obtained from a Professional Engineer.

This certification covers the above mentioned unit for a period of 6 YEARS AS PER CAOEC RECOMMENDED PRACTICE 4.0 from the date of inspection, or until the unit is damaged by handling, transportation or operation.

Reviewed
By:



11-Sep-2025





REES N.D.T. INSPECTION SERVICES 2008 LTD.



15612-89 Street
Grande Prairie, AB T8V 2N8

Grande Prairie
(780) 539-3594
(780) 532-8047 (Fax)

Dispatch
1-888-540-3594
www.reesndt.com

Vegreville
(780) 603-4887
Email: gcoers@reesndt.com

INSPECTION DATE: 18-Aug-25

CLIENT: Caliber Energy Systems
ADDRESS: 10497 92 St
High Level AB T0H 1Z0

REES NDT PO NUMBER: R87904

CLIENT PO NUMBER:

REES NDT WO NUMBER: 222069

CAOEC LEVEL IV INSPECTION CERTIFICATE

CERTIFICATION OF: Slip Type Elevator Assembly

MAKE: Jiangsu Rutong Petro-Machinery Co. Ltd.

MODEL: 1.315 - 2 7/8" MYT - c/w 2 3/8" Slip Assembly

SERIAL NUMBER: CER 0502

CAPACITY: 40 ton

OWNER: Caliber Energy Systems

REPAIRS/MECHANICAL COMPLETED BY: Rees NDT

Rees NDT Inspection Services 2008 Ltd. performed a CAOEC VISUAL AND NON-DESTRUCTIVE TESTING inspection on the above mentioned SLIP TYPE ELEVATOR ASSEMBLY. All observations have been recorded and are disclosed in the complete documentation for Rees NDT Work Order #222069. The scope of this certificate is limited to the inspection of the item's structural condition at the time of inspection and does not imply a review of the equipment's design or its associated capacity rating. The capacity noted above reflects the original equipment manufacturer's maximum capacity rating and may be reduced by operating conditions, regulatory requirements and the use of auxillary equipment that has a lower capacity rating.

The undersigned Engineer reviewed all the inspection reports and has issued this certificate after all required repairs (if any) were completed. In the undersigned Engineer's opinion, the SLIP TYPE ELEVATOR ASSEMBLY may be returned to service and is safe to use within the original manufacturer's specifications. The equipment owner is obliged to supply the OEM's operating instructions with the equipment and maintain the OEM's identification and capacity markings. If OEM information cannot be obtained, certified replacements must be obtained from a Professional Engineer.

This certification covers the above mentioned unit for a period of 6 YEARS AS PER CAOEC RECOMMENDED PRACTICE 4.0 from the date of inspection, or until the unit is damaged by handling, transportation or operation.

Reviewed
By:



11-Sep-2025

