



October 15, 2019

Caliber Energy Systems Ltd.
10497 92 St.
High Level, Alberta
T0H 1Z0

EQUIPMENT CERTIFICATION

CUSTOMER:	Caliber Energy Systems Ltd.
CUSTOMER EQUIPMENT # :	VRS 869
CUSTOMER RIG # :	N/A
EQUIPMENT DESCRIPTION:	WTM Tubing Elevator
MODEL AND RATING: 100 Tons	3 1/2" - 90° - 100 Ton (88964-daN)
INSPECTION COMPANY / REPORT #:	Alco / H -13793
ALCO ENGINEERING FILE # :	74003-E
ALCO WORK ORDER # :	74003

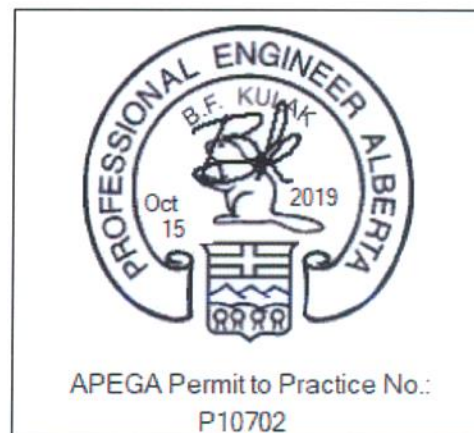
This document certifies that all parts and/or assemblies for the equipment listed above, have undergone a Level IV inspection and repair as per Canadian Association of Oilwell Drilling Contractors (CAODC) R.P. 4.0.

All Engineering, material acceptance, repairs, modifications, dimensional inspections, proof test and non-destructive testing (NDT) were performed, or approved by Alco Inc. qualified personnel.

The equipment may be returned to service at the referenced equipment rating.

This certification is valid for a period of 6 years from the date indicated on the Engineer's stamp shown below, or until such time that the equipment has been damaged either as a result of operation, transportation or handling.

Brian Kulak, P.Eng
Engineering Manager
Alco Inc.



CERTIFICATE OF INSPECTION

Date: **October 15 , 2019**

Equipment Owner : **Caliber Energy Systems**
900 8th Street NW
Slave Lake, Alberta
T0G 2A1

Rig # :

Equipment Description : **3 1/2 90° 100 Ton**
WTM Tubing Elevator

Serial # : **VRS 869**

Inspection Report # : **H-13793**

Job # : **74003**

The undersigned hereby certifies that an inspection has been carried out on the above mentioned equipment in accordance with the applicable standards:

CAODC R.P. 1.0, 1.0A, 2.0, 3.0, 4.0, 5.0

API Specification 8C / 7K

Inspection Method : ASTM E-709 *Standard Guide for Magnetic Particle Inspection*

Inspection Method : ASTM E-165 *Standard Guide for Liquid Penetrant Inspection*

Inspection Method: ASTM E-110 / ASTM A-956 *Standard Guide For Hardness Testing*

Inspection Method: ASTM E-797 *Standard Guide For Ultrasonic Thickness Testing*

Inspection Performed In Accordance With ASME Sec. 8, Div. 1, App. 6

Acceptance Standard: ASTM E-125 *Reference Photographs For Magnetic Particle Indications*

Load Test #: **ALCO LT 1910 74003**

No Discontinuities Noted At Time Of Final Inspection
After Load Test

Technician: L. Ponech

C.G.S.B. 10873

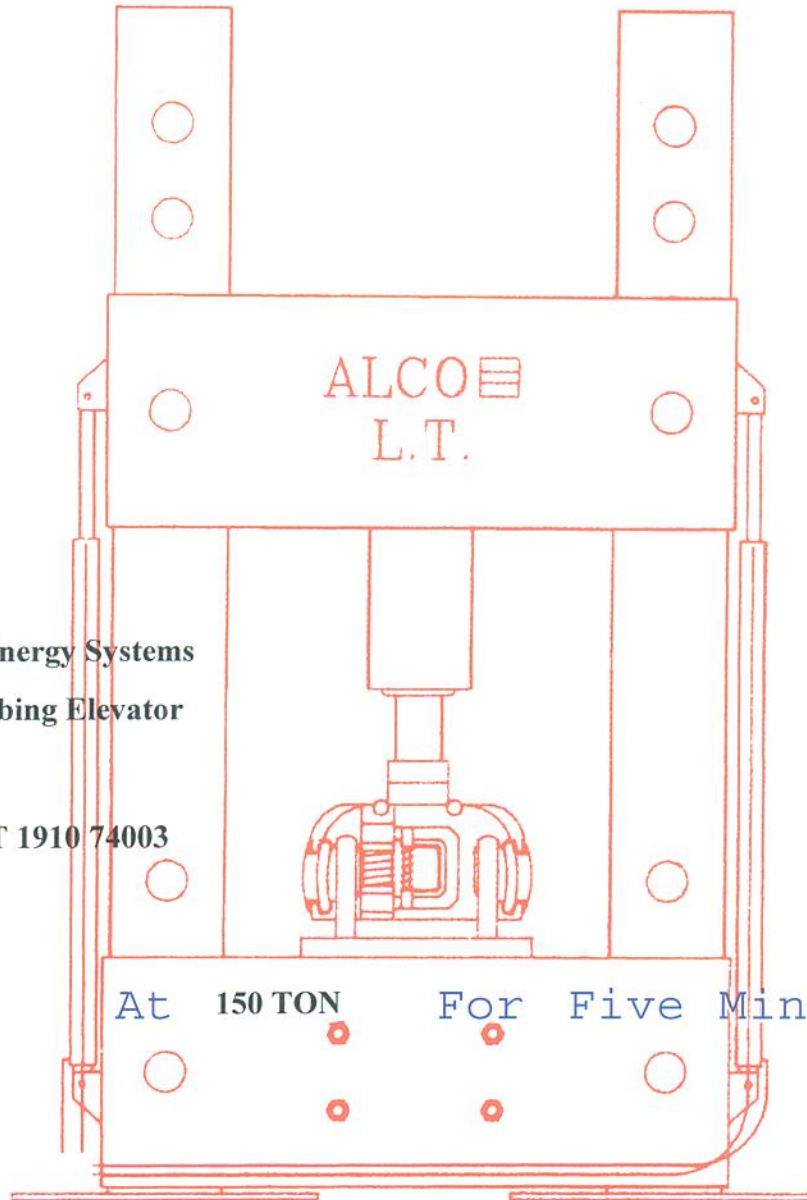
Signed: 



INC.

6925 - 104 STREET, EDMONTON, ALBERTA T6H 2L5
Phone (780) 435-3502 • Fax (780) 436-1858

Load Test Certificate



Owner: **Cailber Energy Systems**
Make: **WTM Tubing Elevator**
Model: **3 1/2 90°**
S/N: **ALCO LT 1910 74003**
Rig:
Rating: **100 TON**
Load Tested

At **150 TON** For **Five Min**

Approved By

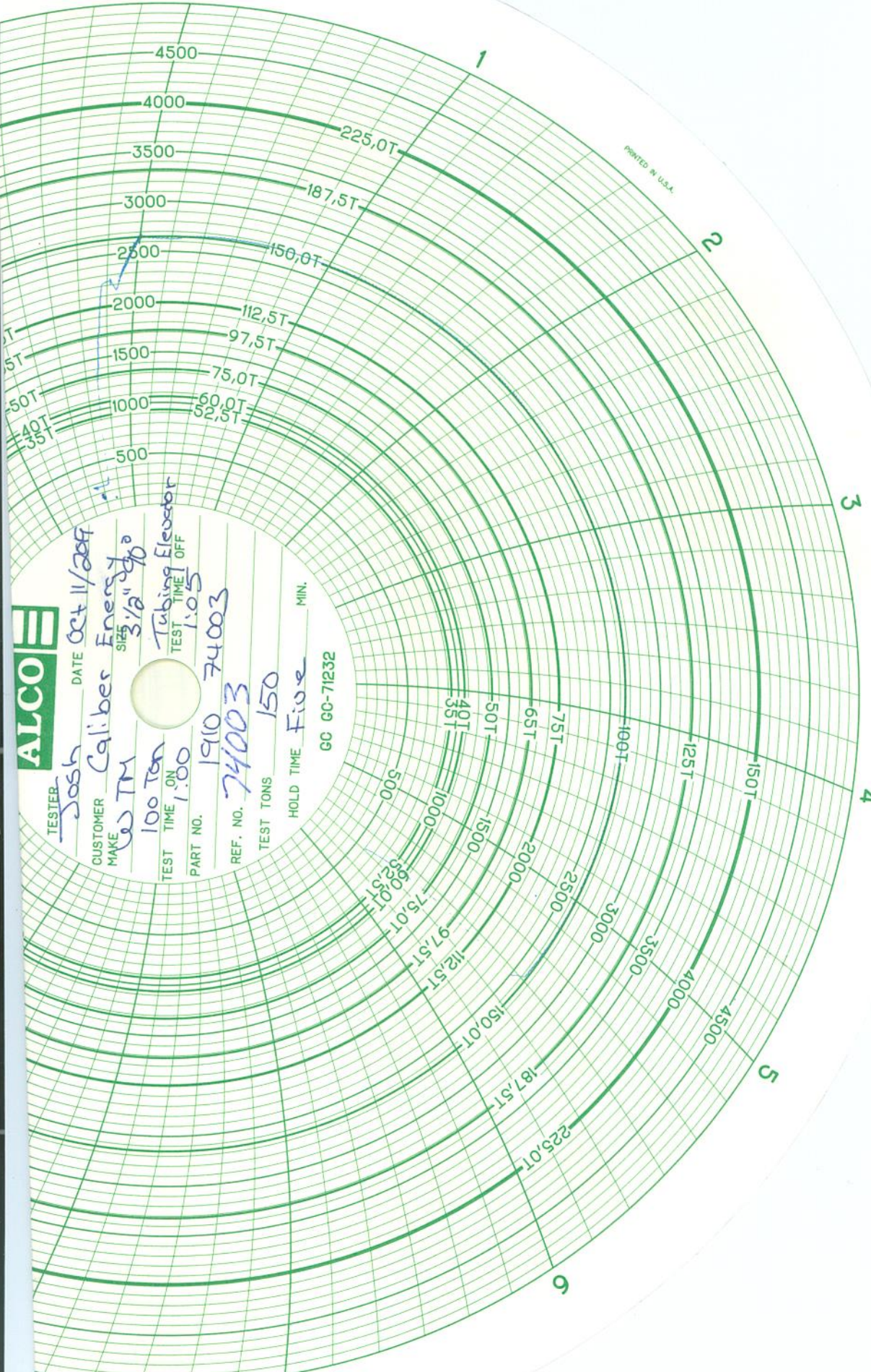
15/0

PRINTED IN U.S.A.



TESTER: Josh DATE: Oct 11/2009
 CUSTOMER: Caliber Energy
 MAKE: TM SIZE: 3/8" x 90°
 TEST TIME ON: 100 Ton TEST TIME OFF: 1.05
 PART NO.: 1910 REF. NO.: 74003
 TEST TONS: 150 HOLD TIME: Five MIN.

GC 60-71232



1

2

3

4

5

6

7